

Making a Holiday Stocking

The pattern used for this tutorial is Simplicity #4784

(This tutorial is in no way meant to take the place of the pattern directions. Please follow them and consult this tutorial for additional help.)

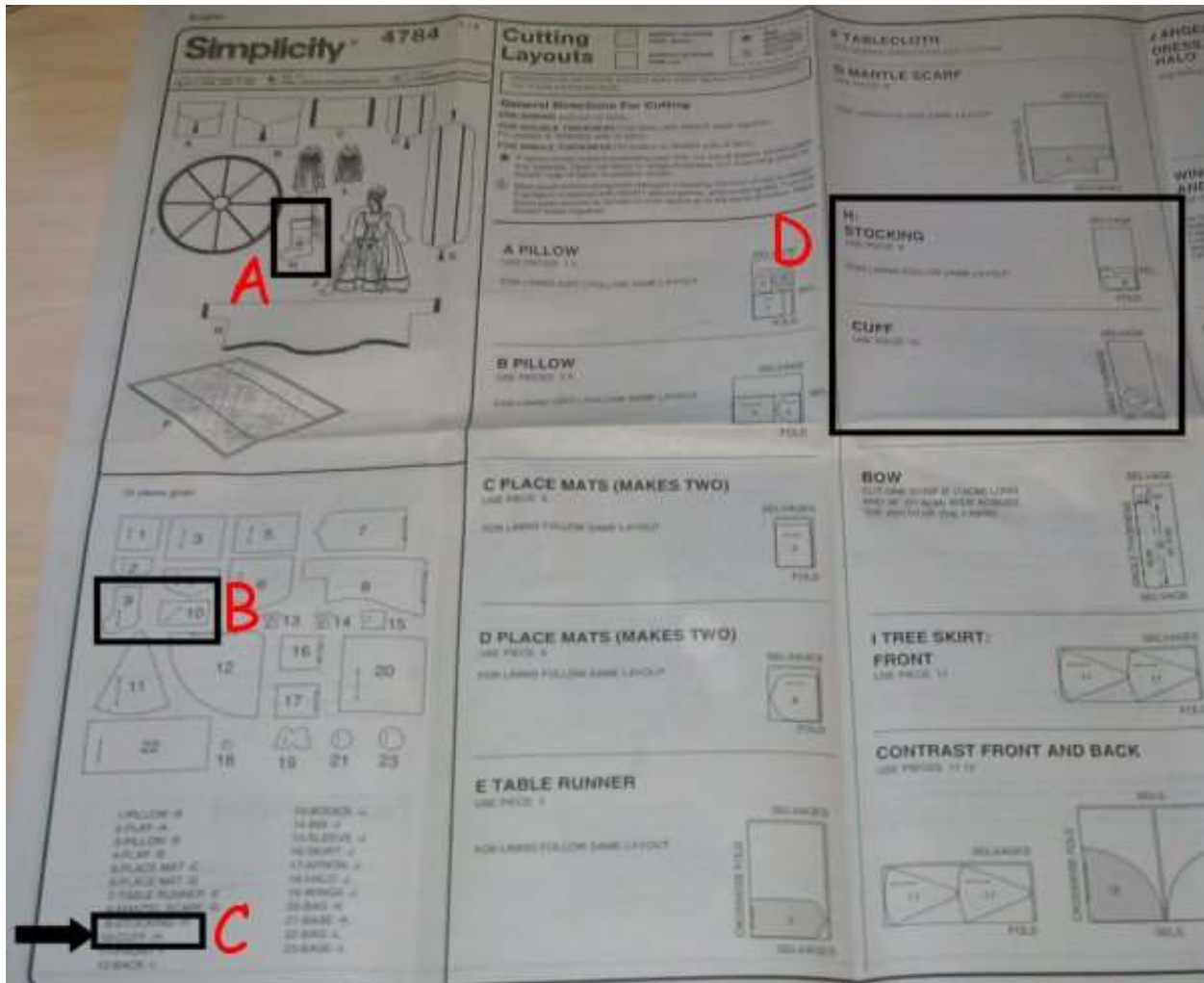
- 1- Gather your materials (per pattern directions)
 - a. Simplicity Pattern 4784
 - b. Stocking fabric
 - c. Cuff fabric
 - d. Sewing thread
 - e. Small piece of ribbon for loop



(Below is a picture to help you understand a few of the phrases used)

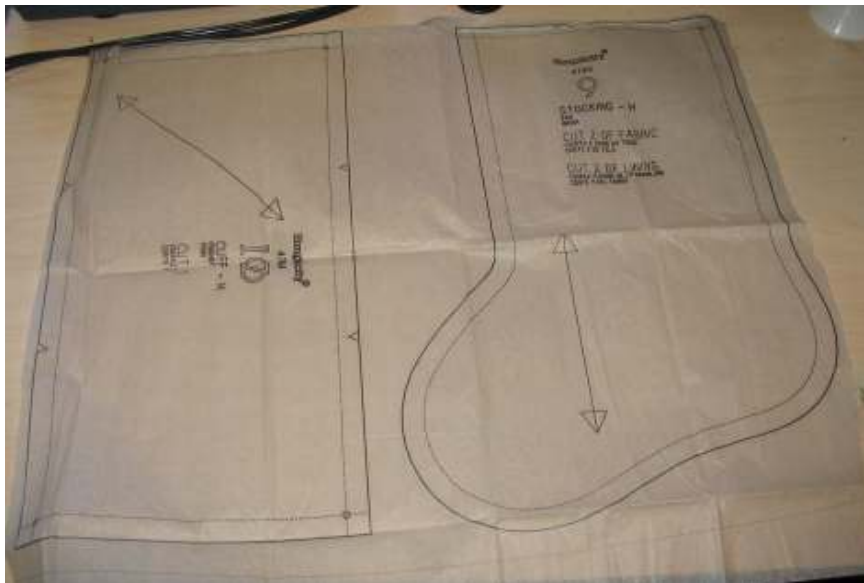


2- Find the view you are going to make



- Pattern H
- Picture of what pieces will be used
- Pattern pieces 9 and 10
- Fabric layout guide (this tells you how they suggest the pattern pieces be cut out)

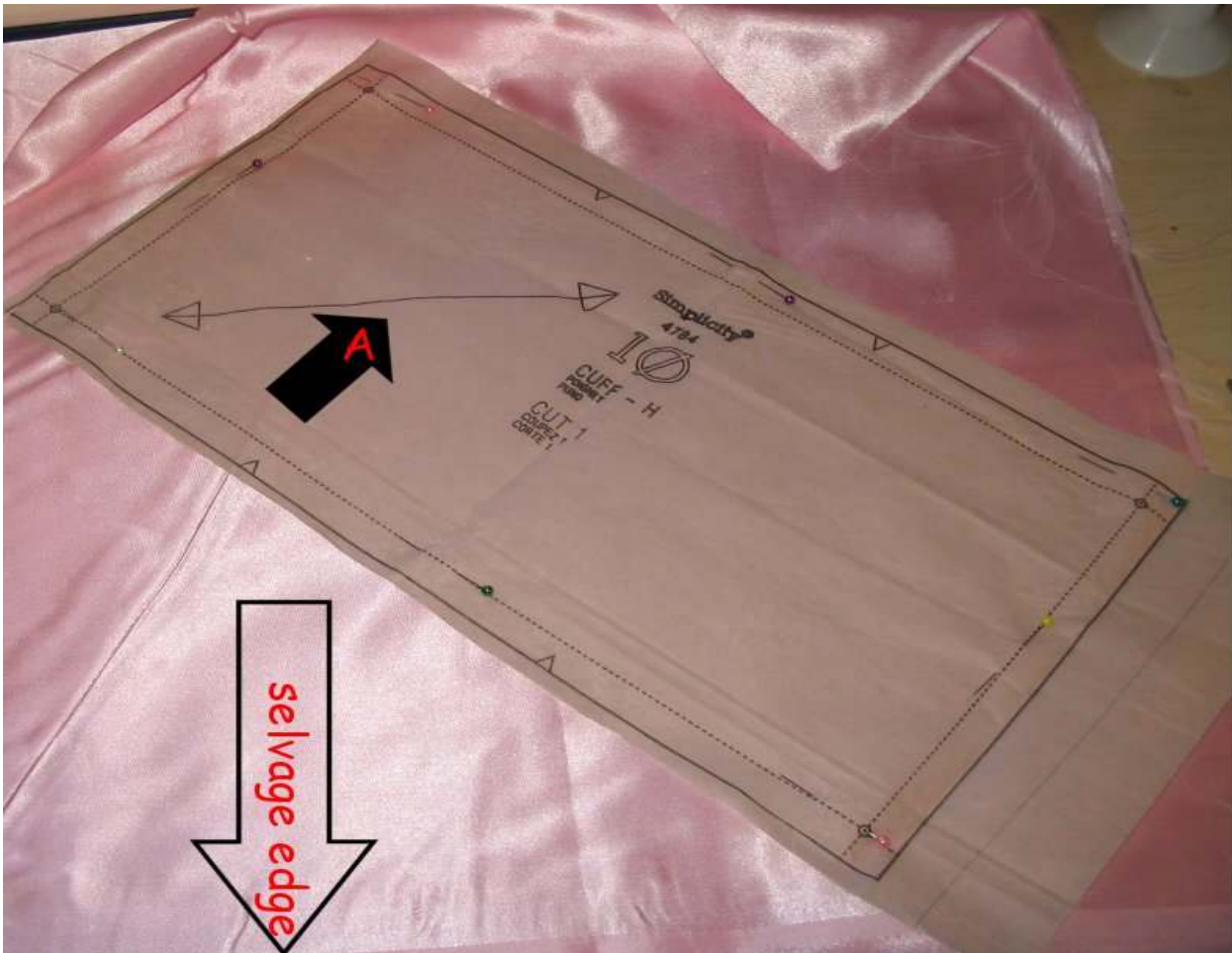
3- Locate and cut pattern pieces 9 and 10 apart from the huge tissue sheet



- 4- Layout the pattern pieces and cut
Pay attention to how many of each pattern piece you need to be cutting.
For this stocking you will need 2 of fabric and 2 of lining (I'm using the same fabric for both)
and 1 for the cuff.



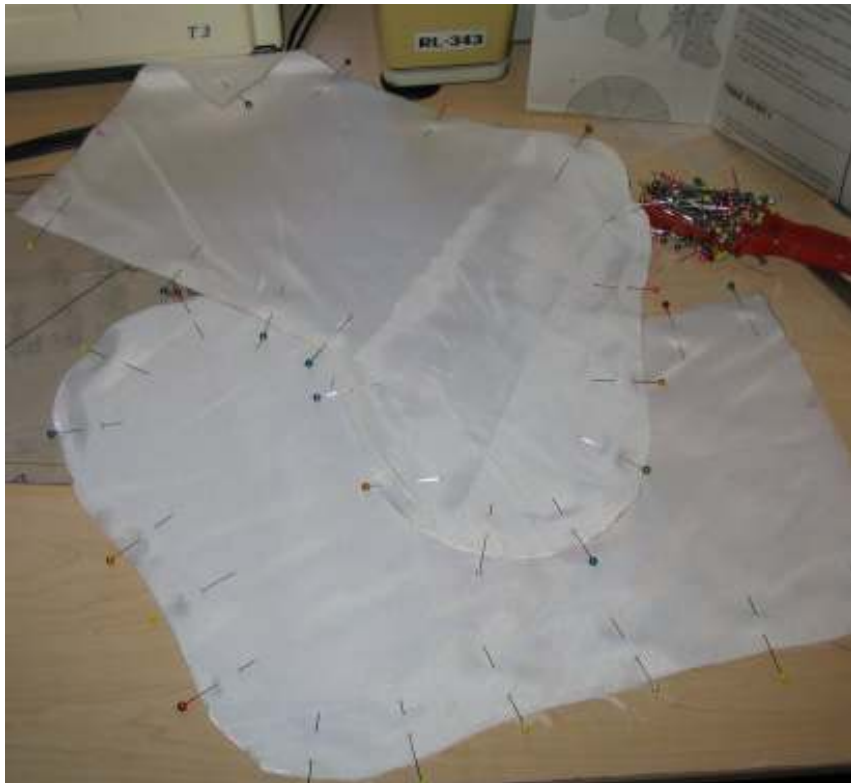
- 5- Ensuring that you pay attention to the grain lines.
The fabric grain runs with the selvage (factory bound edge) or length of fabric.



- 6- Transfer all pattern markings, such as the dots (A) and the notches (B).
Use your favorite dress makers marking tool (chalk, disappearing ink, water soluble ink, or tracing paper)



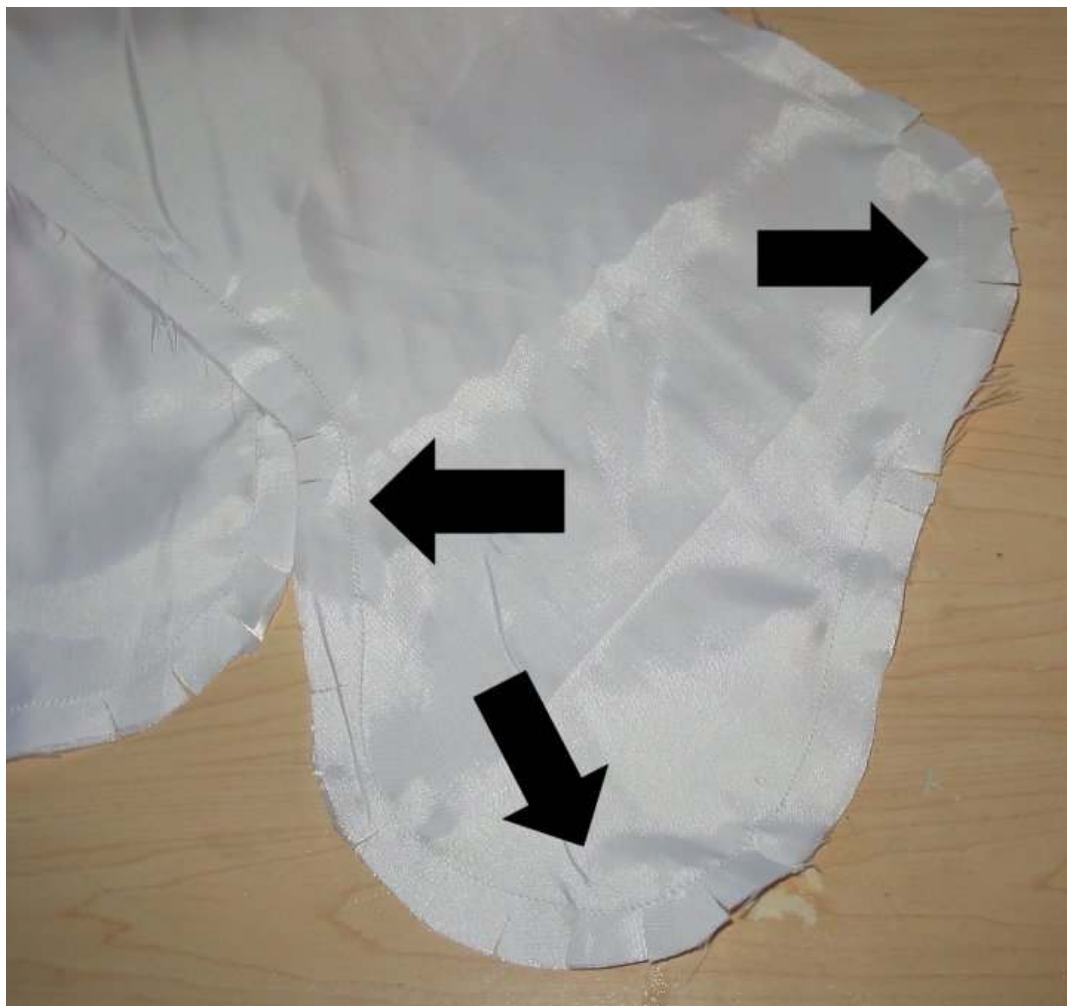
- 7- Pin the 2 stocking pieces together and the 2 lining pieces together, leaving un-notched edge free. (Pattern Directions 1)



8- Stitch around both stocking and lining, 5/8" seam.



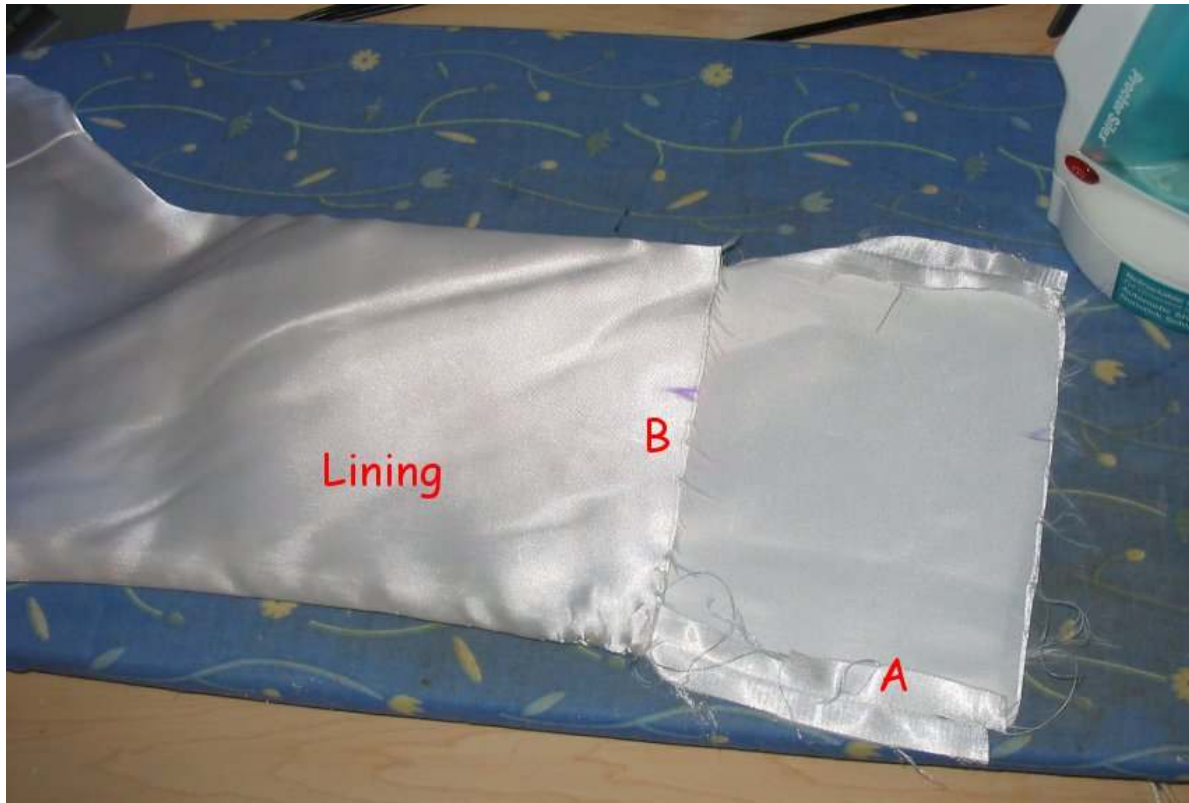
9- Remove pins and clip curves on both stocking and lining. (This will help the fabric lay smoother when turned.)



10- Press the seams open (A).

Turn the LINING right side out.

Slip the STOCKING inside the LINING, wrong sides together (B)



Matching the notches, Pin around top to hold in place.

11- Machine baste in place and remove pins.

(To machine baste, set your sewing stitch to a long stitch. You do not have to backstitch when basting, you will generally remove basting after item is assembled.)



12- Cut an 8" piece of ribbon.

Fold in half and pin on back seam of lining.



13- Cuff:

With right sides together, pin un-notched edges together, matching dots and stitch. (Pattern directions #3)



14- Press seam

Fold in half, WRONG sides together and pin raw edges.

Machine baste.



15- Pin the cuff to the outside of the lining. Right sides together.

Stitch 5/8 from edge.

I have a serger/overlock machine, so at this point I also serged the top of each piece to clean up the edges.



16- Stitch the cuff to the lining/stocking.



17- At this point your finished sewing ☺

Turn it inside out, putting the lining on the inside where it belongs.



18- Turn the cuff down and your finished.

